

1-Strand Chain Maintenance & Service

This section will describe service procedures for major mechanical elements of your system.

⚠ WARNING ⚠

Only qualified and trained personnel should perform the disassembly and assembly of electrical and mechanical components.

Chain Tension Adjustment

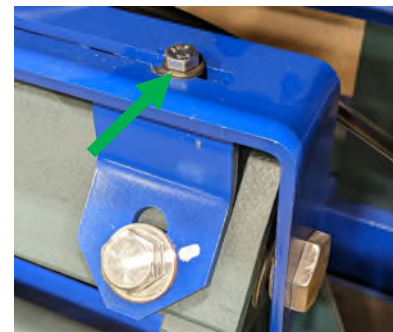
- 1 Remove and lock out power to the 1-Strand Chain conveyor using your plant's procedures.



- 2 Remove M6 bolts (8) securing the end cover plate.



- 3 Loosen the M6 bolt to free the adjustment screw on both take-up bearing frames.

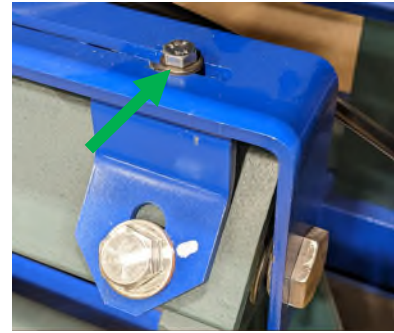


- 4 Turn the adjustment screws on both take-up bearing frames to move the sprocket until the tension is properly adjusted.



5

Tighten the M6 bolt to set the adjustment screw on both take-up bearing frames.

**6**

Return the end cover plate and tighten the M6 bolts (8).

**7**

Complete restore power procedure and verify proper function.



Assembly of the Chain

- Take the inner link to be connected, the washers and the idle pin.
- 1 Insert the idle pin in the bush and make it protrude equally on both sides of the inner link.



- Place a washer on each end of the idle pin.
- 2 **Note:** the idle pin has one end with a magnet and one without. The outer link has a hole with flats and a round hole.



ⓘ NOTICE ⓘ

Keep the end of the idle pin with the magnet on the side of the outer link where the round hold is.

- 3 While keeping in position the two washers insert the inner link in the outer link.



- 4 Using the supplied key (or a suitable screwdriver) rotate the idle pin until the flats of the pin correspond to the ones of the outer link.



- 5** Insert the chain pin in the outer link from the side where the round hole is, match and lock the chain pin to the idle pin by means of the magnet.



- 6** Fully insert the chain pin into the outer link, possibly with the aid of a rubber hammer. At the same time the false pin will exit from the opposite side.



ⓘ NOTICE ⓘ

During the extraction of the idle pin make sure that the washers do not move or fall from their position. Check the alignment of the flats of the chain pin with the ones of the outer link.

- 7** Place the special locking ring in the groove of the pin.



- 8** Close the ring with the pliers.



Disassembly of the Chain

- 1 Using the special pliers, open the closing ring and remove it.



- 2 With the help of the rubber hammer, remove the pin from the link.



- 3 Remove the inner link from the outer link.



(i) NOTICE (i)

During these operations, be careful not to lose the washers placed between the inner link and the outer link.