

2-Strand Chain Maintenance & Service

This section will describe service procedures for major mechanical elements of your system.

⚠ WARNING ⚠

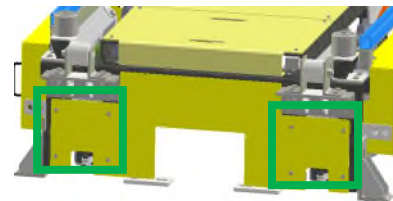
Only qualified and trained personnel should perform the disassembly and assembly of electrical and mechanical components.

Chain Tension Adjustment

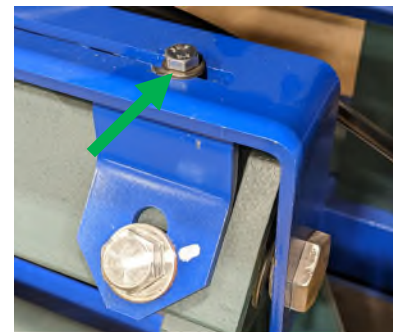
- 1 Remove and lock out power to the 2-Strand Chain conveyor using your plant's procedures.



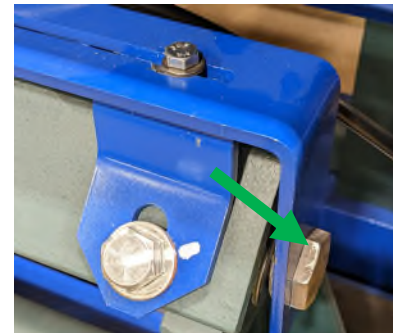
- 2 Remove M6 bolts (7) securing the end cover plate.



- 3 Loosen the M6 bolt to free the adjustment screw on both take-up bearing frames.

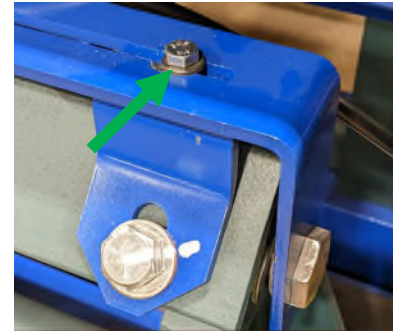


- 4 Turn the adjustment screws on both take-up bearing frames to move the sprocket until the tension is properly adjusted.

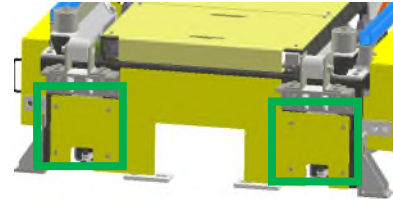


5

Tighten the M6 bolt to set the adjustment screw on both take-up bearing frames.

**6**

Return the end cover plate and tighten the M6 bolts (8).

**7**

Complete restore power procedure and verify proper function.

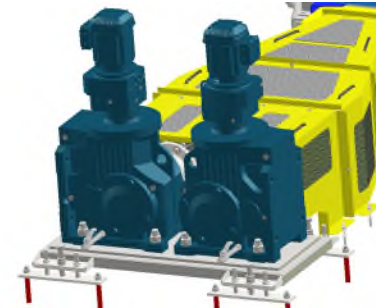


Switching Main to Standby Gearmotor

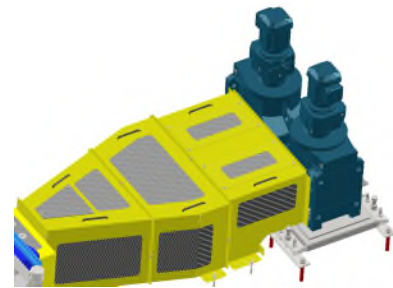
- 1 Remove and lock out power to the 2-Strand Chain conveyor using your plant's procedures.



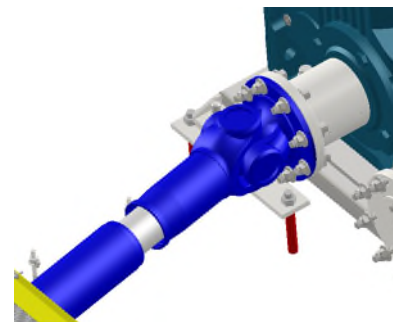
- 2 Manually release the brake on the main gearmotor to release any tension from the chains.



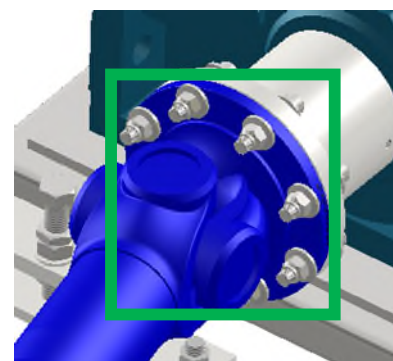
- 3 Undo the hex heads and remove the guards covering the cardan shaft.



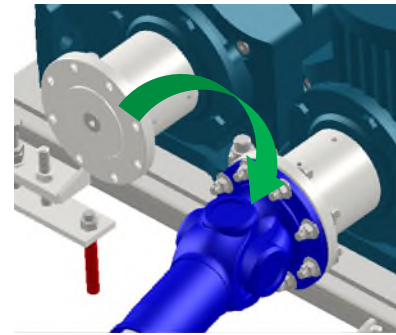
- 4 Loosen the set screw in the cardan shaft at the gearmotor end.



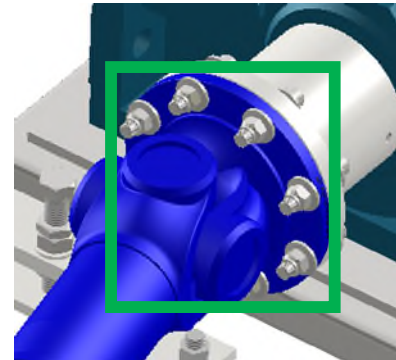
- 5 Undo the M16 bolts (8) holding the cardan shaft onto the companion flange at the main gearmotor



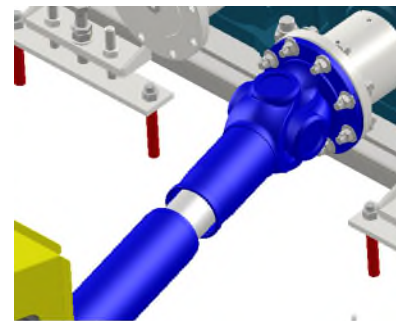
- 6 Remove the cardan shaft from the main gearmotor and attach to the standby gearmotor finger tight.



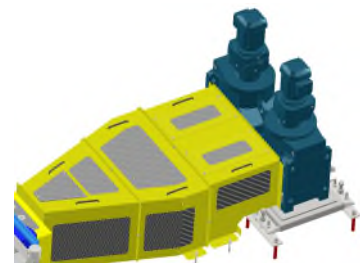
- 7 Tighten the M16 bolts (8) to 219 Nm and secure the cardan shaft to the companion flange.



- 8 Tighten the setscrew on the cardan shaft.



- 9 Return any removed guards.



- 10 Restore power to the conveyor.
Make any changes necessary at the HMI to inform the system controller that you switched to the standby motor.
Verify proper function of the chain conveyor.

