

2-Strand Oven Chain Maintenance & Service

This section will describe service procedures for major mechanical elements of your system.

⚠ WARNING ⚠

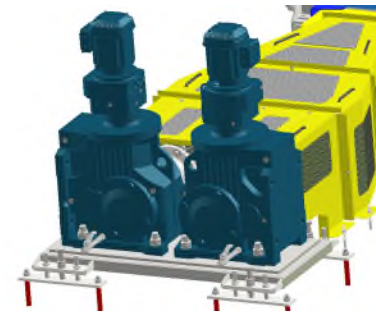
Only qualified and trained personnel should perform the disassembly and assembly of electrical and mechanical components.

Switching Main to Standby Gearmotor

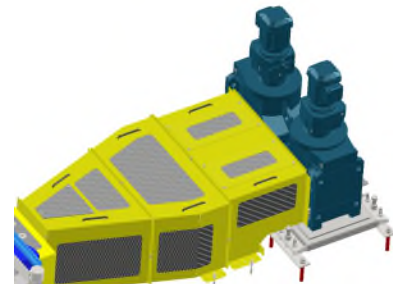
- 1 Remove and lock out power to the 2-Strand Oven Chain conveyor using your plant's procedures.



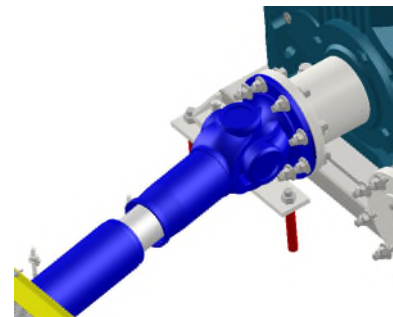
- 2 Manually release the brake on the main gearmotor to release any tension from the chains.



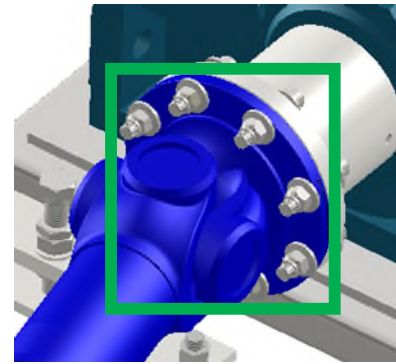
- 3 Undo the hex heads and remove the guards covering the cardan shaft.



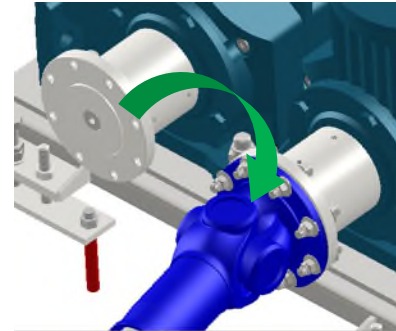
- 4 Loosen the set screw in the cardan shaft at the gearmotor end.



- 5 Undo the M16 bolts (8) holding the cardan shaft onto the companion flange at the main gearmotor



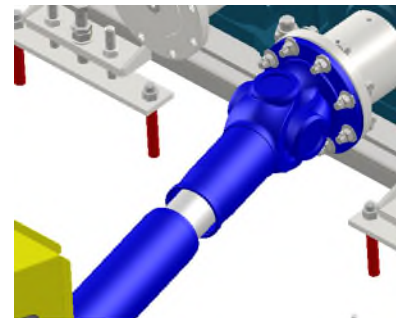
- 6 Remove the cardan shaft from the main gearmotor and attach to the standby gearmotor finger tight.



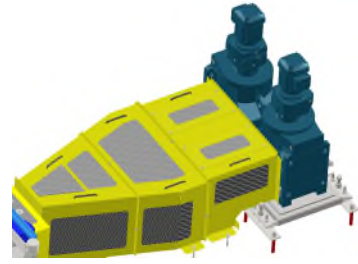
- 7 Tighten the M16 bolts (8) to 219 Nm and secure the cardan shaft to the companion flange.



- 8 Tighten the setscrew on the cardan shaft.



- 9 Return any removed guards.



Restore power to the conveyor.

- 10 Make any changes necessary at the HMI to inform the system controller that you switched to the standby motor.

Verify proper function of the chain conveyor.

