

# Indexer Maintenance & Service

This section will describe service procedures for major mechanical elements of a Shuttle.

## ⚠ WARNING ⚠

- Only qualified and trained personnel should perform the disassembly and assembly of electrical and mechanical components.
- Before attempting any maintenance on this equipment all involved personnel should follow plant internal regulations along with any state, federal, or province regulations. Do not begin any repair procedure until the proper shutdown procedures and the appropriate power lockout procedures have been applied.

## How to Replace the Gearmotor

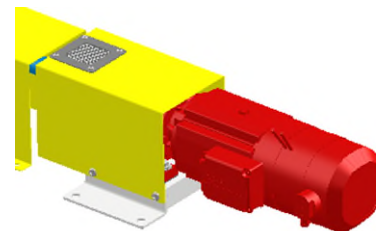
- 1 Remove and lock out power to the shuttle using your plant's procedures.



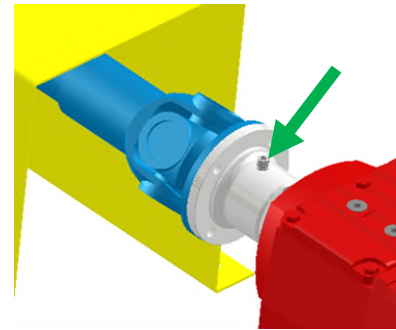
- 2 Disconnect the cables from the gearmotor.



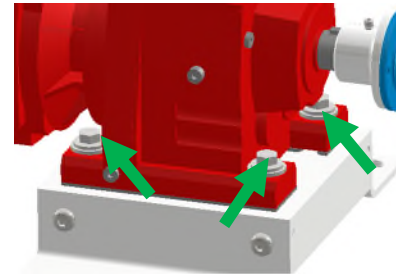
- 3 Remove the guard covering the cardan shaft flange to the gearmotor.



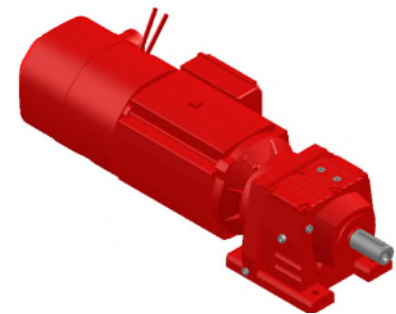
- 4 Undo the setscrew in the cardan shaft and remove the universal joints from gearmotor shaft.



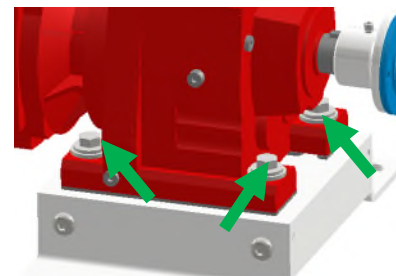
- 5 Undo the M12 bolts from the gearmotor base.



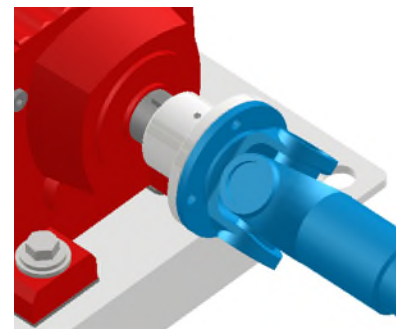
- 6 Remove and replace the gearmotor.



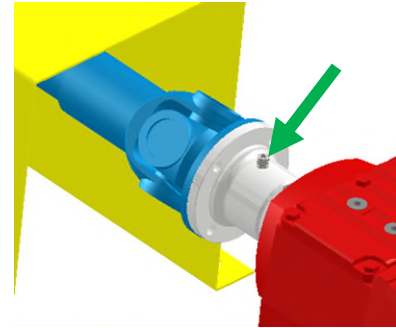
- 7 Secure the gearmotor to the base by tightening the M12 bolts.



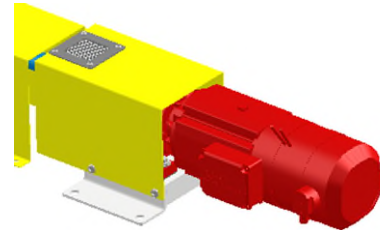
- 8 Connect the cardan shaft to the output shaft.



- 9 Tighten the set screws on the cardan shaft flange.



- 10 Replace and tighten the screws holding the guard over the cardan shaft.



- 11 Reconnect the motor plug.



- 12 Complete restore power procedure and verify proper function.

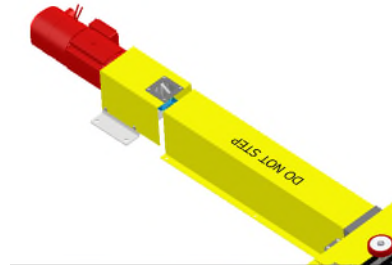


## How to Replace a Cardan Shaft

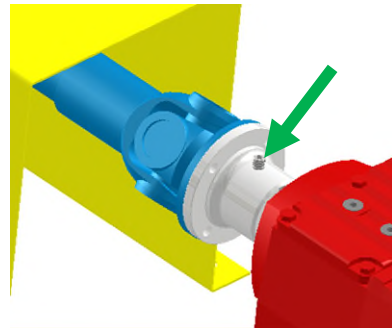
- 1 Remove and lock out power to the shuttle using your plant's procedures.



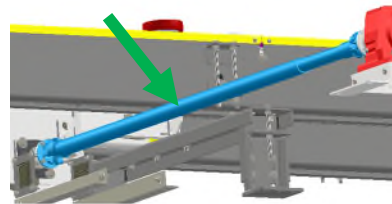
- 2 Remove the guard covering the cardan.



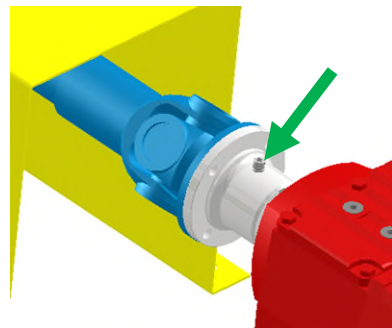
- 3 Undo the setscrew in the cardan shaft.



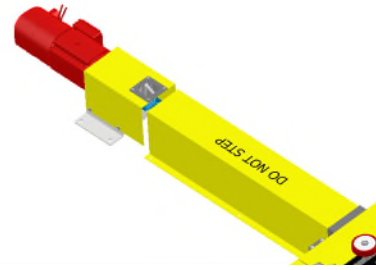
- 4 Remove and replace the cardan shaft.



- 5 Tighten the set screw.



- 6 Replace and tighten the screws holding the guard over the cardan shaft.



- 7 Complete restore power procedure and verify proper function.

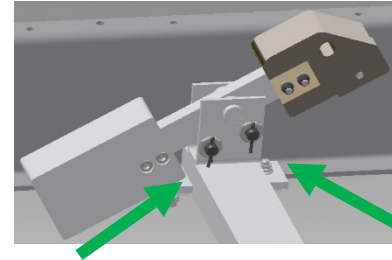


## How to Replace the Grounding Shoe

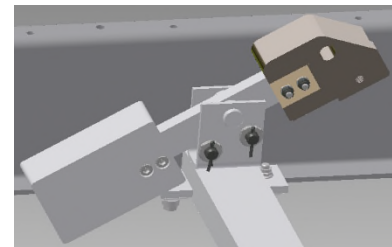
---

- 1 Disconnect the ground wire.

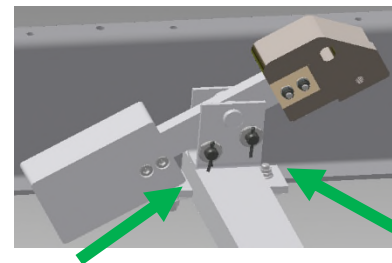
- 2 Remove bolts on both sides.



- 3 Lift and remove old assembly.



- 4 Replace with new assembly and tighten bolts.



- 5 Reconnect the grounding wire.