

## Lift Table Wet Application Maintenance & Service

This section will describe service procedures for major mechanical elements of a Power Roll Bed NA.

### **⚠ WARNING ⚠**

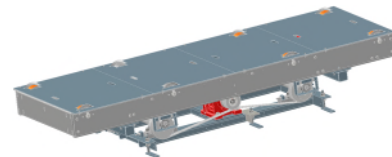
- Only qualified and trained personnel should perform the disassembly and assembly of electrical and mechanical components.
- Before attempting any maintenance on this equipment all involved personnel should follow plant internal regulations along with any state, federal, or province regulations. Do not begin any repair procedure until the proper shutdown procedures and the appropriate power lockout procedures have been applied.

### Placing the Lift into the Maintenance Position

- 1 Remove any payload from the eccentric lift.



- 2 Move the lift to the full up position.



- 3 Place the maintenance blocks at the corners of the lift.



- 4 Slowly lower the lift onto the maintenance blocks until the cam rollers are just clear of the rail.



- 5 Cut and lock out power to the lift using your plant's safety procedures.

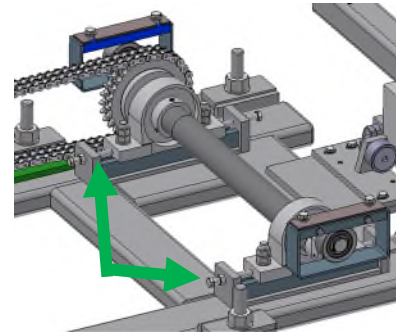


## How to Replace the Lifting Chains

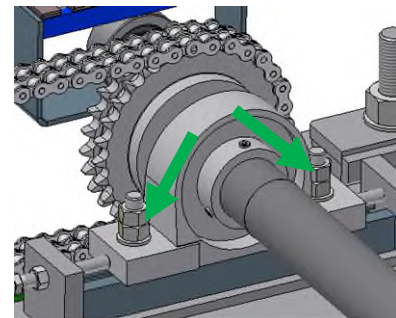
- 1 Place the lift into the maintenance position.



- 2 Loosen the inner jack screws for all the pillow block bearings.  
*Note: DO NOT make any adjustments to the outer jack screws at this time. They will be used as a reference when returning the pillow block bearings to their original positions.*



- 3 Loosen the pillow block bearing M16 bolts for all the pillow block bearings.



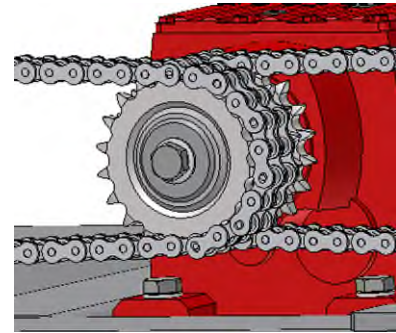
- 4 Pull the lifting cam assemblies slightly to the center of the lift to reduce tension on the lifting chains.



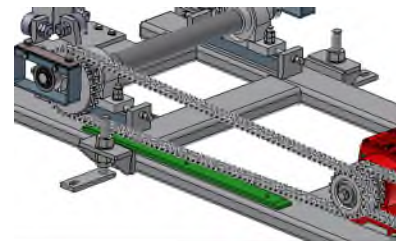
- 5 Remove the master link for the lifting chains and separate the chains. Remove the lifting chains.



- 6 Inspect the lift sprocket and the drive sprocket for wear and damage. Replace as necessary.



- 7 Place the new lifting chains around the lift and drive sprockets.

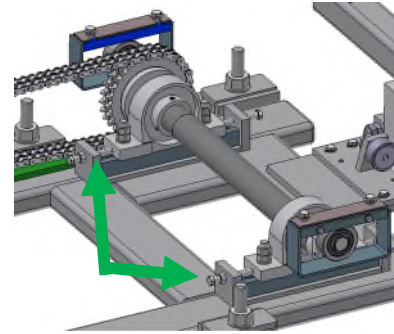


- 8 Install the master link for the lifting chains.

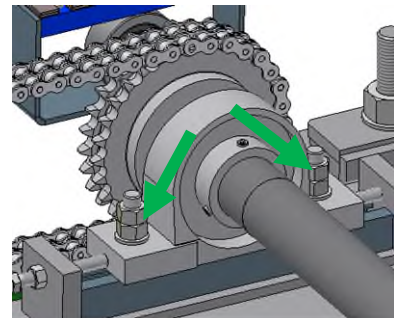


**9**

Tighten the inner jack screws evenly keeping the lift sprockets parallel with the drive sprocket until the lift chains are properly tensioned. If necessary, make adjustments to the outer jack screws.

**10**

Tighten all pillow block bearing mounting screws.

**11**

Restore power to the system and lift the table off the maintenance blocks. Return the maintenance blocks to their designated storage area.

**12**

Cycle the lift table and observe that the lifting belts are tracking straight and that the table is even all around. Correct if necessary.

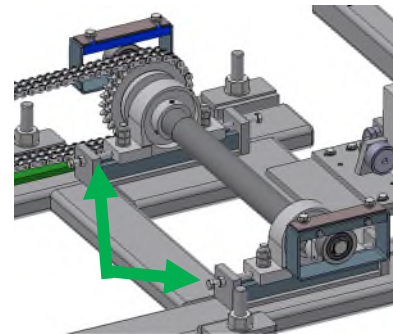


## How to Replace the Drive Sprocket

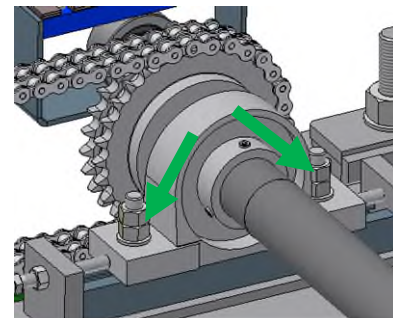
- 1 Place the lift into the maintenance position.



- 2 Loosen the inner jack screws for all the pillow block bearings.  
**Note:** DO NOT make any adjustments to the outer jack screws at this time. They will be used as a reference when returning the pillow block bearings to their original positions.



- 3 Loosen the pillow block bearing M16 bolts for all the pillow block bearings.

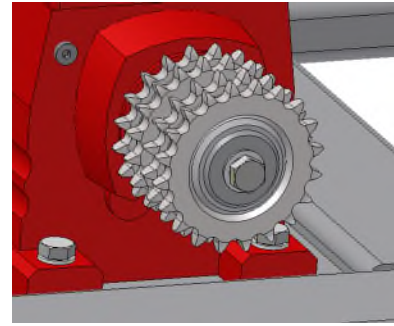


- 4 Pull the lifting cam assemblies slightly to the center of the lift to reduce tension on the lifting chains.

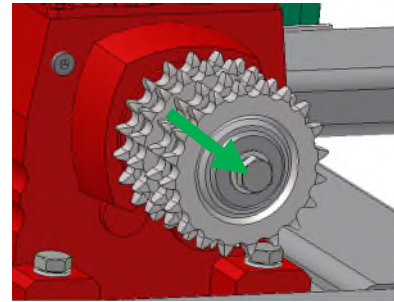




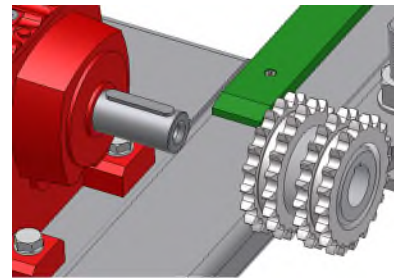
- 5 Free the chains from the drive sprocket.



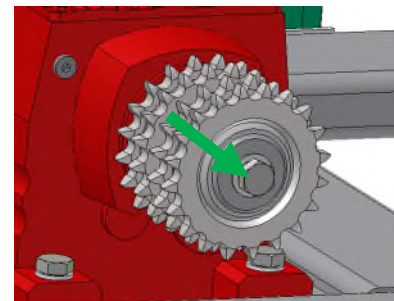
- 6 Remove the M16 center bolt and washer to free the drive sprocket from the motor.



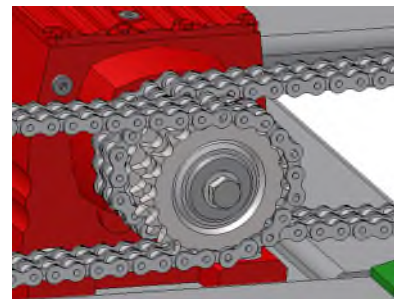
- 7 Remove the original drive sprocket from the motor drive shaft. Inspect the drive shaft key and replace if necessary.



- 8 Mount the new drive sprocket and secure with the M16 center bolt.

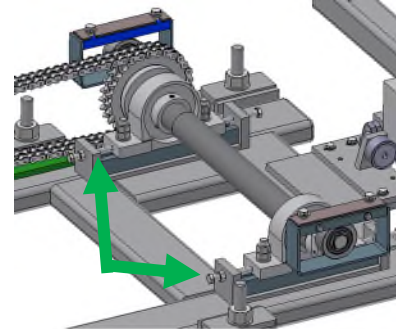


- 9 Return the chains to the drive sprocket.

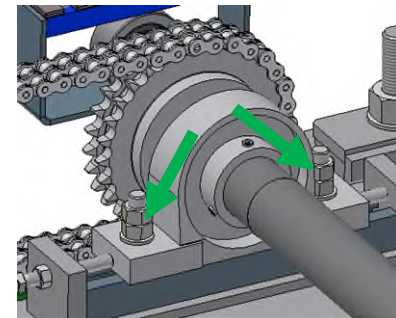


**10**

Tighten the inner jack screws evenly keeping the lift sprockets parallel with the drive sprocket until the lift chains are properly tensioned. If necessary, make adjustments to the outer jack screws.

**11**

Tighten all pillow block bearing mounting screws.

**12**

Restore power to the system and lift the table off the maintenance blocks. Return the maintenance blocks to their designated storage area.

**13**

Cycle the lift table and observe that the lifting belts are tracking straight on the drive pulley. Correct if necessary.





## How to Replace the Lift Motor

- 1 Place the lift into the maintenance position.

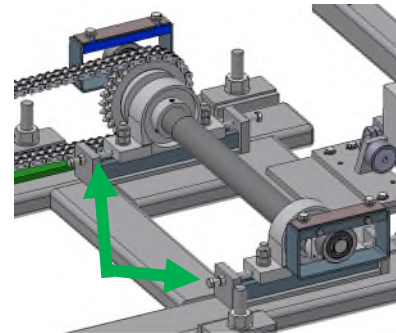


- 2 Disconnect the cables from the lift motor.

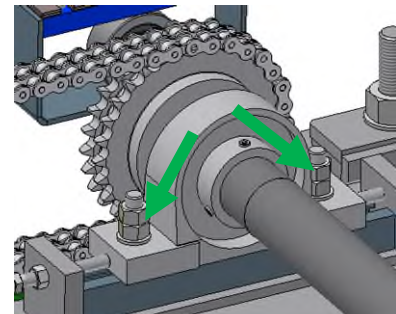


Loosen the inner jack screws for all the pillow block bearings.

- 3 **Note:** *DO NOT* make any adjustments to the outer jack screws at this time. They will be used as a reference when returning the pillow block bearings to their original positions.



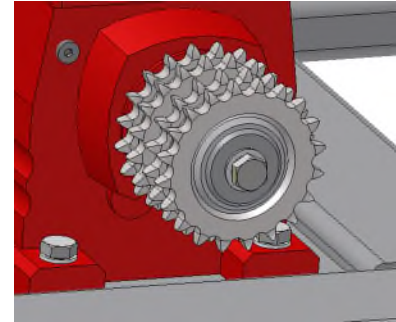
- 4 Loosen the pillow block bearing M16 bolts for all the pillow block bearings.



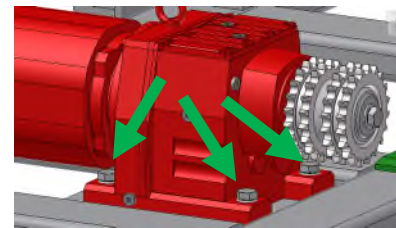
- 5** Pull the lifting cam assemblies slightly to the center of the lift to reduce tension on the lifting chains.



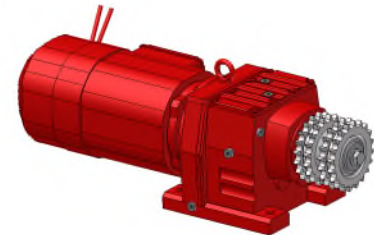
- 6** Free the chains from the drive sprocket.



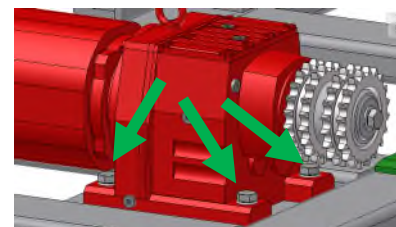
- 7** Remove the M16 bolts (4) securing the gearmotor.



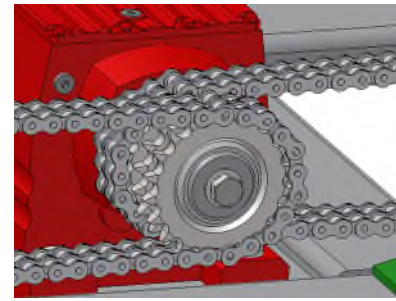
- 8** Remove the gearmotor. Inspect the drive sprocket for wear or damage. If found in good condition, remove and place on the new gearmotor otherwise install a new drive sprocket.



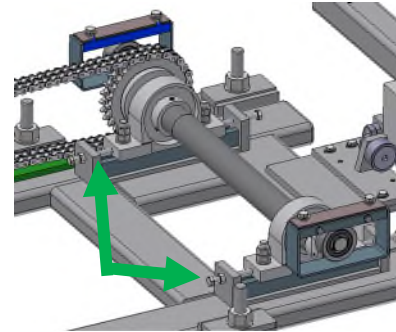
- 9** Secure the new gearmotor by tightening the M16 bolts (4).



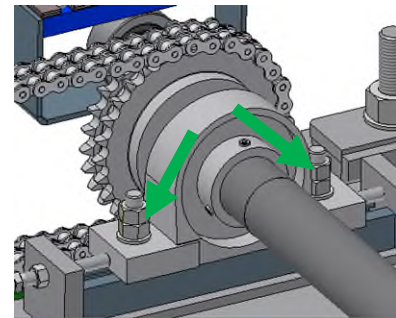
- 10 Return the chains to the drive sprocket.



- 11 Tighten the inner jack screws evenly keeping the lift sprockets parallel with the drive sprocket until the lift chains are properly tensioned. If necessary, make adjustments to the outer jack screws.



- 12 Tighten all pillow block bearing mounting screws.



- 13 Restore power to the system and lift the table off the maintenance blocks. Return the maintenance blocks to their designated storage area.



- 14 Cycle the lift table and observe that the lifting belts are tracking straight and that the table is even all around. Correct if necessary.

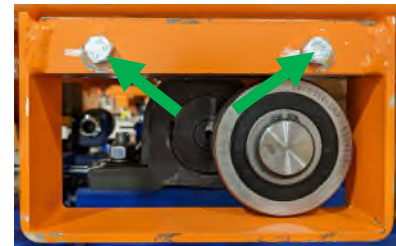


## How to Replace a Cam Roller

- 1 Place the lift into the maintenance position.



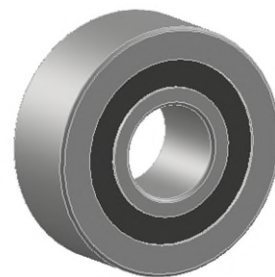
- 2 Loosen and remove the M8 bolts (2) that hold the cam roller rail to the lift table.



- 3 Remove the retainer ring on the original cam roller.



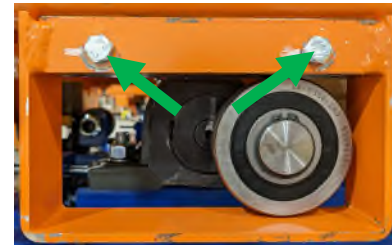
- 4 Replace the cam roller.



- 5 Re-install retainer ring.



- 6 Install the cam roller rail with M8 bolts (2).



- 7 Restore power to the system and lift the table off the maintenance blocks. Return the maintenance blocks to their designated storage area.



- 8 Cycle the lift table and test for proper operation.

