

EMS VDL Safety

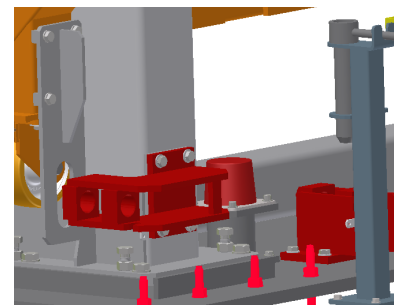
Whenever you are maintaining and/or servicing the EMS VDL, you should mechanically secure it. Use the following procedure:

⚡ ⚠ **WARNING** ⚠ ⚡

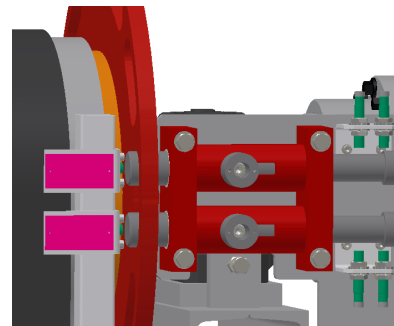
Only qualified and trained personnel should perform the disassembly and assembly of electrical and mechanical components.

Securing the EMS VDL

- 1 Raise or lower the Carriage to the top of bottom of the stroke depending on what maintenance procedure needs to be completed.
Once achieved, manually engage the safety pin located at the base of the EMS VDL column. An opening is provided for both the Carriage and Counterweight



- 2 Engage the safety lockout pins. Ensure a minimum of one safety pin has been extended through the starwheel.
Note: Only one extended safety pin is necessary to be considered properly locked out.



- 3 Shutdown and lockout the Asset according to plant lockout procedures.

