

Docking Station Maintenance & Service

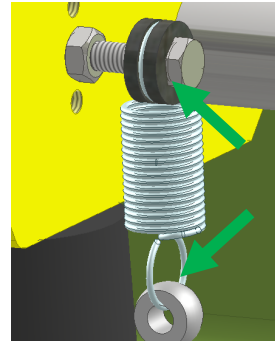
This section will describe service procedures for major mechanical elements of a Docking Station or Dolly.

⚠ WARNING ⚠

- Only qualified and trained personnel should perform the disassembly and assembly of electrical and mechanical components.
- Before attempting any maintenance on this equipment all involved personnel should follow plant internal regulations along with any state, federal, or province regulations. Do not begin any repair procedure until the proper shutdown procedures and the appropriate power lockout procedures have been applied.

Replacing the Docking Station Tension Spring

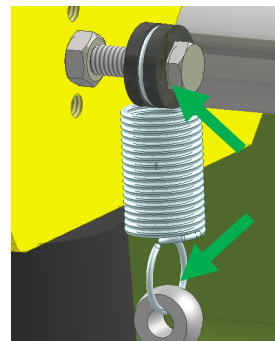
- 1 Dismantle the ends of the tension spring.



- 2 Remove and replace the tension spring.

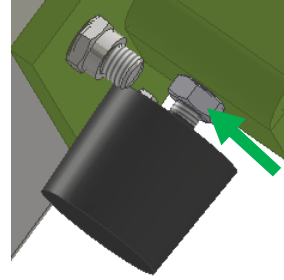


- 3 Install the ends of the tension spring.



Replacing the Docking Station Rubber Bumper

- 1** Unscrew hexagonal locknut M10.



- 2** Remove and replace rubber bumper.



- 3** Tighten hexagonal locknut M10.

