

Safety



Typical Lockout Tag

Safety should be a primary concern for all personnel working in an industrial environment. Industrial machinery can cause serious injury or death when workers improperly operate equipment, are distracted, or when they are not aware of current equipment status.

While many equipment safety features are built in to control automated equipment, the best way to prevent an accident is for everyone to stay alert, be safety conscious, and gain the necessary knowledge to safely operate the equipment, while applying common sense.

When in doubt, LOCK IT OUT!

You should Lock Out and Tagout equipment:

- Anytime a guard or a safety device is removed.
- When a person must place any part of their body where it could be caught by moving parts.
- Before performing maintenance.
- Before making repairs.
- During troubleshooting procedures.
- During installation new equipment.
- During removal or rework of existing equipment.

NOTICE

Prior to performing service on a conveyance system, always follow internal plant, state, federal, or provincial regulations.

Lift Table Safety

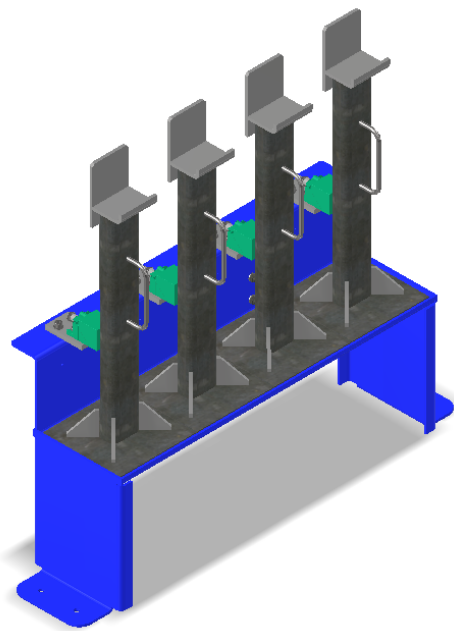
Whenever you are maintaining and/or servicing equipment, always mechanically secure the equipment, while performing the following procedure:

⚡ ⚠ **WARNING** ⚠ ⚡

Only qualified, trained personnel should assemble or disassemble electrical and/or mechanical components.

Lift Table – Safety Components

Depending on the design, Lift Tables can make use of different safety features. The two most common features you will see are shown here:



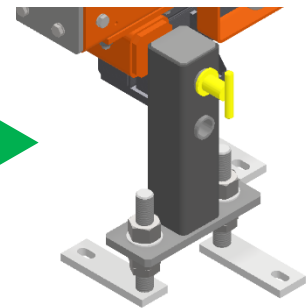
Maintenance Stands, also called “Stop Blocks,” are stands placed under the Power Roll Bed frame when the Lift Table is raised to its highest position.



Safety Pins are solid steel rods that are inserted into designated slots on the Lift Table frame when it is at its highest or lowest positions.

◀ A Safety Pin with slots directly on the frame

A Safety Pin sub-assembly ▶

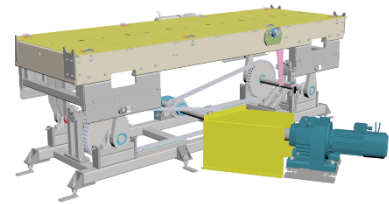


Placing the Lift into the Maintenance Position

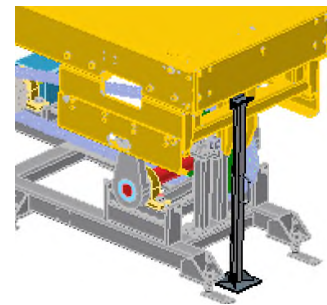
- 1 Remove any payload from the eccentric lift.



- 2 Move the lift to the full up position.



- 3 Place the maintenance blocks on the ends of the lift.



- 4 Cut and lock out power to the lift using your plant's safety procedures.

